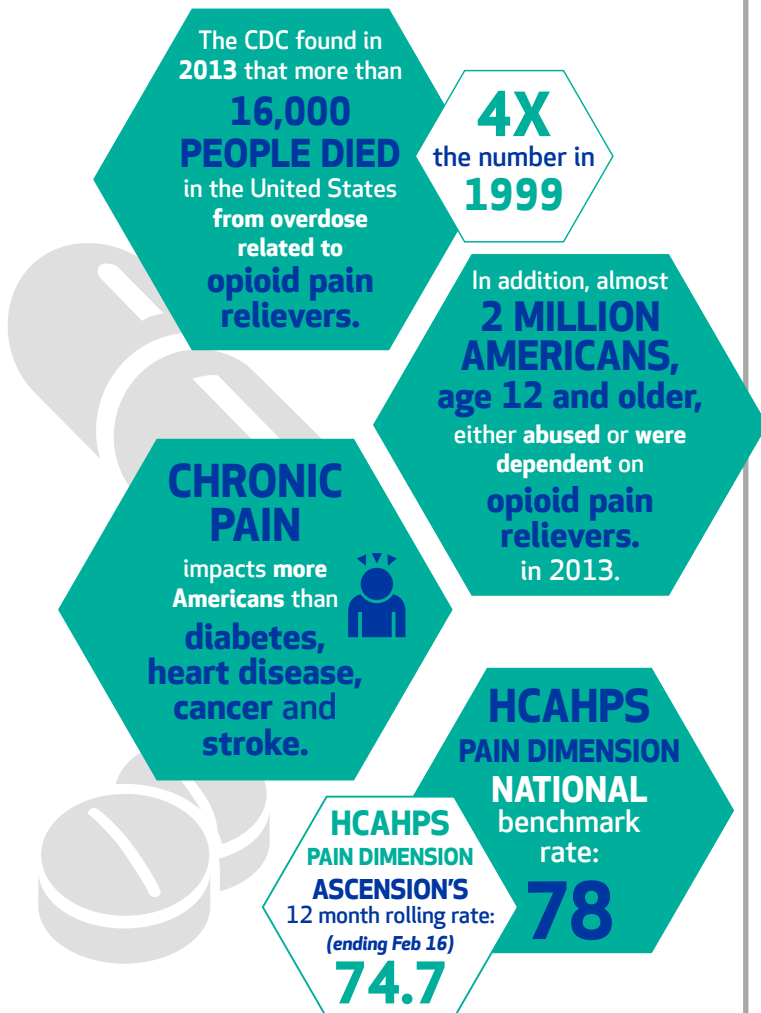


# Working Together to Deliver Safe, Compassionate, Evidence-based Pain Management to the Patients We Serve

Version 2 • December 2016

## Why Focus on Pain Management?



## Ascension's Pain Management Initiative

**What:** To deliver safe, compassionate, evidence-based **pain management** to the patients we serve, in accordance with national guidelines.

**How:** Develop and implement **Ascension's Pain Management Guidelines**.

## Ascension's Pain Management Goals

**PAIN ASSESSMENT TOOLS GOAL:**  
Standardize evidence-based pain assessment tools for all patient populations **across the care continuum**.

**INTEGRATIVE THERAPY GOAL:**  
Increase awareness and utilization of integrative therapies as an adjunct for pain management for all patient populations **across the care continuum**.

**PAIN MANAGEMENT GUIDELINES GOAL:**  
Recommend evidence-based practice solutions, in alignment with national guidelines, for the management of acute, chronic pain and hospital-based order sets **across the care continuum**.

## Pain Management Guideline Highlights:

Partner with patients and their families to identify functional goals to guide treatment



Establish multimodal treatment plan through use of scheduled non-opioid foundation with Integrative Therapies



Integrate new decision-making approach to breakthrough pain



Ensure opioids (when needed) are used safely and according to national prescribing/administering guidelines



Integrate patient safety components such as sedation assessment, patient risk factors, respiratory rate and depth throughout process



Educate patients on disposal of unused controlled substances

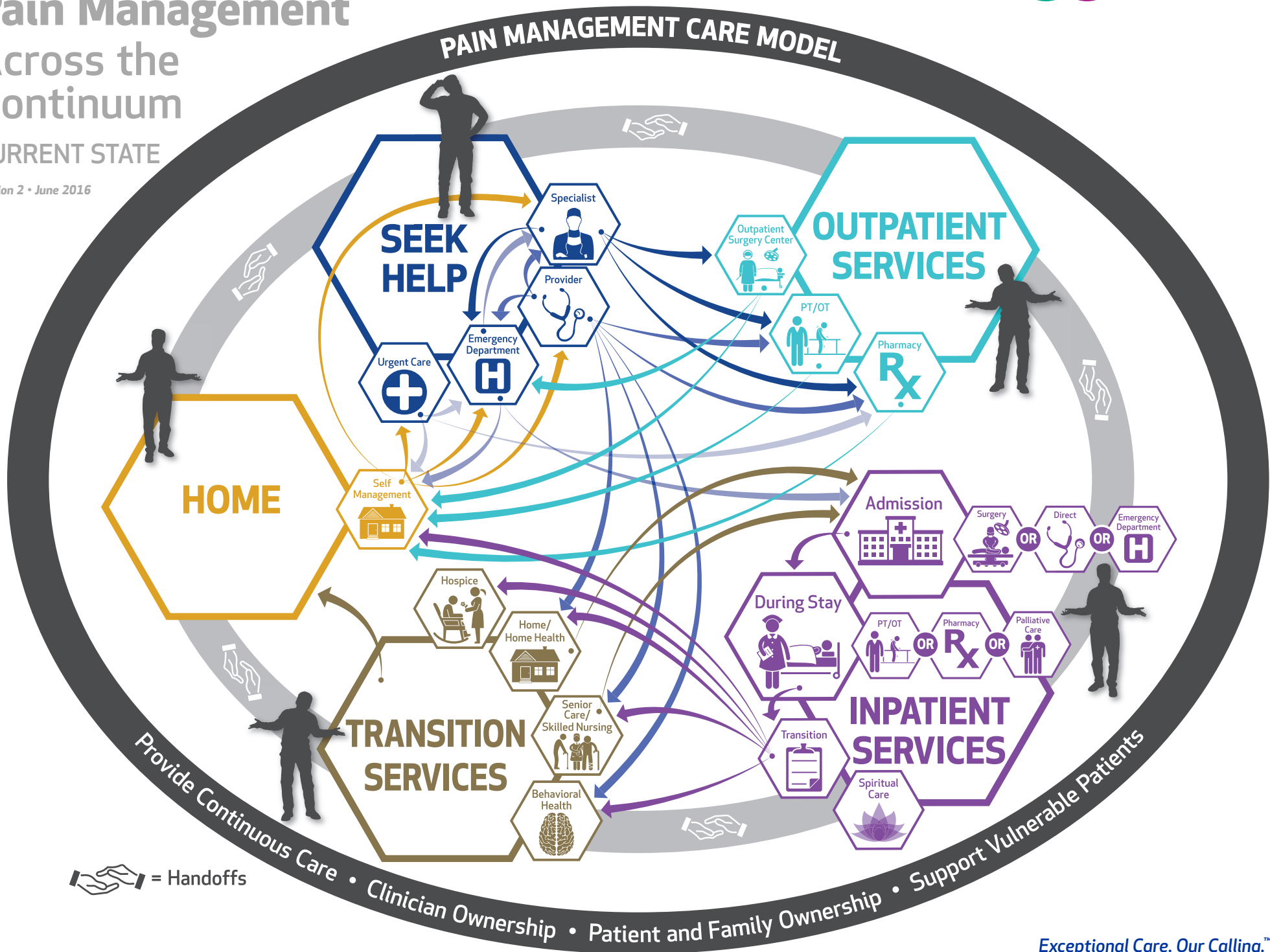



# Pain Management

## Across the Continuum

CURRENT STATE

Version 2 • June 2016



 = Handoffs

• Clinician Ownership • Patient and Family Ownership